

# Summary of Financial Results for 2Q of FY2022

(from April 1, 2021 to September 30, 2021)

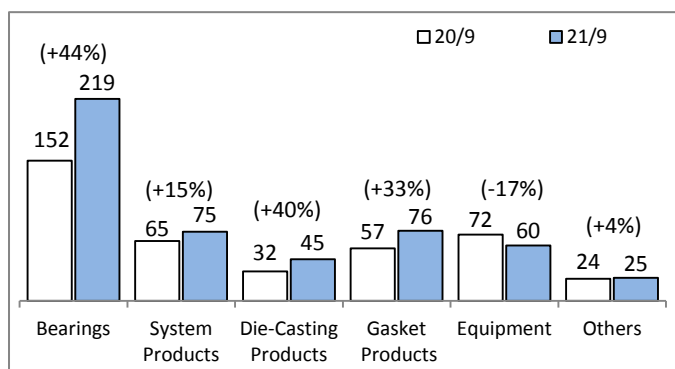
October 28, 2021  
TAIHO KOGYO CO., LTD  
(Code number: 6470)  
(Million yen)

## 1. Consolidated Financial Results

	2020.4~2020.9		2021.4~2021.9		Increase/Decrease		2021.4~2022.3		FY2021/FY2022	
	Results	Profit rate(%)	Results	Profit rate(%)	Results	Rate of change	Forecast	Profit rate(%)	Increase/Decrease	Rate of change
Net Sales	40,480	-	50,170	-	9,689	23.9	101,000	-	8,054	8.7
Operating Income(Loss)	-2,291	-5.7	1,300	2.6	3,592	-	3,500	3.5	2,790	392.9
Ordinary Income(Loss)	-2,258	-5.6	1,534	3.1	3,792	-	3,600	3.6	2,812	356.3
Profit(Loss) Attributable to Owners of Parent	-2,507	-6.2	1,539	3.1	4,046	-	2,800	2.8	2,499	830.9
Foreign Exchange Rate	JPY/US\$	107	110	+3			105	-1		
	JPY/Euro	121	131	+10			120	-3		
Earnings per share(JPY)		86.43	53.05	139.48			96.51	86.14		
Return on equity		-4.1%	2.4%	6.5%			4.4%	3.9%		
Number of Consolidated Subsidiaries		14	14	0			14	0		

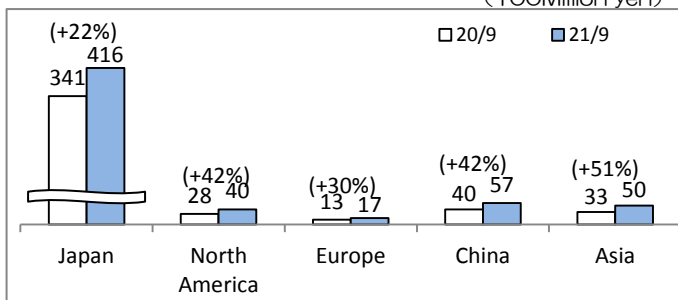
## 2. Summary of Sales

① Sales by products (100Million yen)



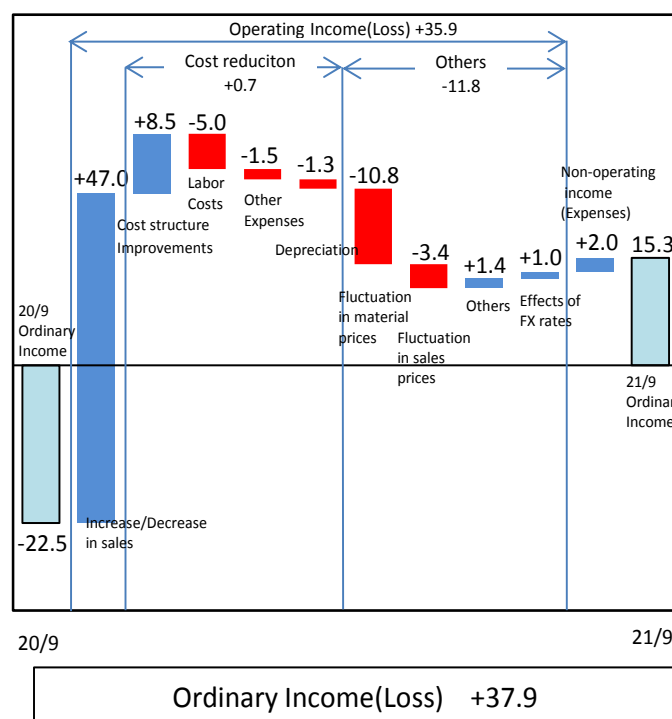
② Sales by region (Before elimination of intercompany sales)

(100Million yen)



## 3. Fluctuation factors of the operating/ordinary income

(100Million yen)



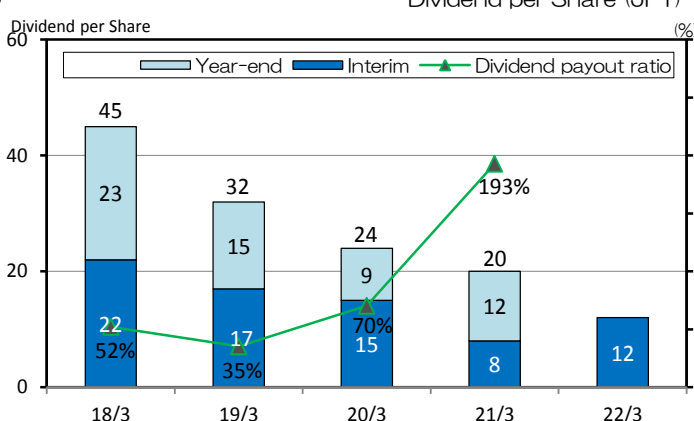
## 4. Consolidated Balance Sheet

(100Million yen)

Assets	2020.4~2020.9			2021.4~2021.9			Change	Liabilities, Net assets		
	2014~21.3	21.4~21.9	Change	2014~21.3	21.4~21.9	Change				
<b>Current assets</b>	577	589	12	<b>Current liabilities</b>	231	238	6			
Cash and deposits, securities	213	227	14	Trade payables	115	117	1			
Trade receivables	226	206	-20	Short-term borrowings	37	41	3			
Inventories	113	133	20	Others	78	80	1			
Others	24	22	-2	<b>Non-current liabilities</b>	262	243	-18			
				Long-term borrowings	244	227	-17			
				Others	17	16	0			
				(Total liabilities)	493	482	-11			
<b>Non-current assets</b>	559	561	1	<b>Shareholders' equity</b>	627	639	12			
Property, plant and equipment	468	464	-3	Total accumulated other comprehensive income	8	21	13			
Intangible assets	20	21	1	Share acquisition rights	1	1	0			
Investments and other assets	71	74	3	<b>Non-controlling interests</b>	6	6	0			
				(Total net assets)	643	669	25			
	1,137	1,151	13		1,137	1,151	13			

## 5. Dividends

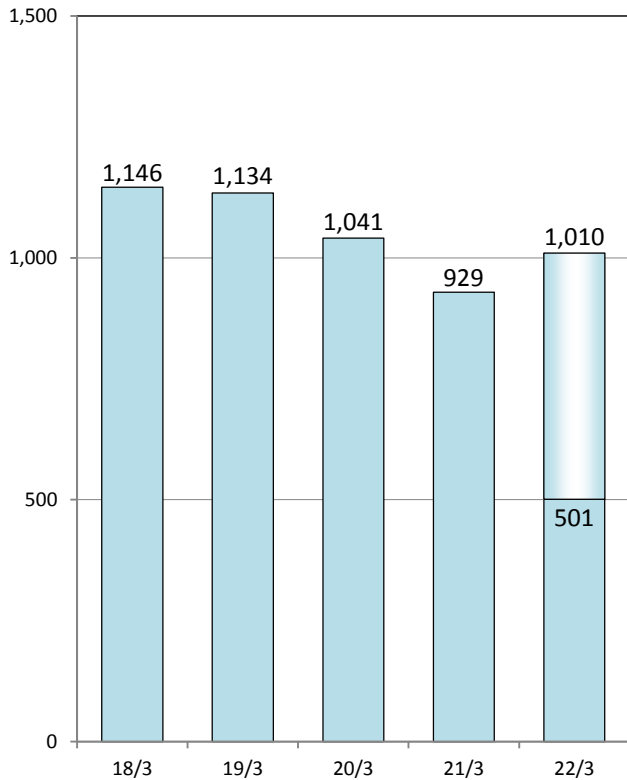
Dividend per Share (JPY)



## 6. Financial Results

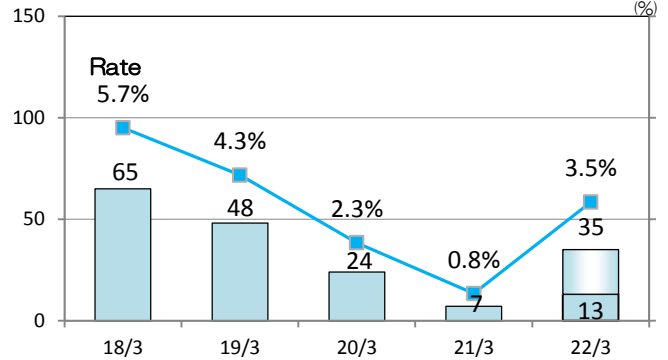
### (1) Net Sales

(100Million yen)



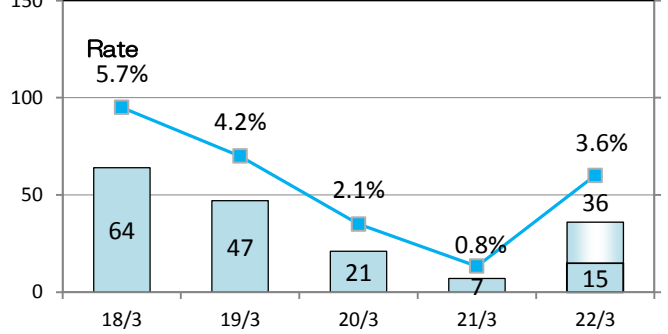
### (2) Operating Income (Loss)

(100Million yen)



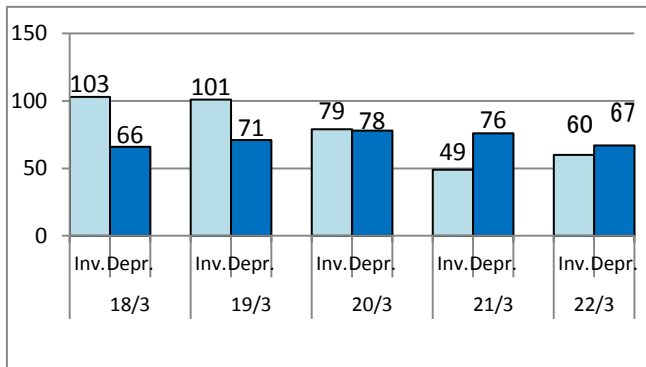
### (3) Ordinary Income (Loss)

(100Million yen)



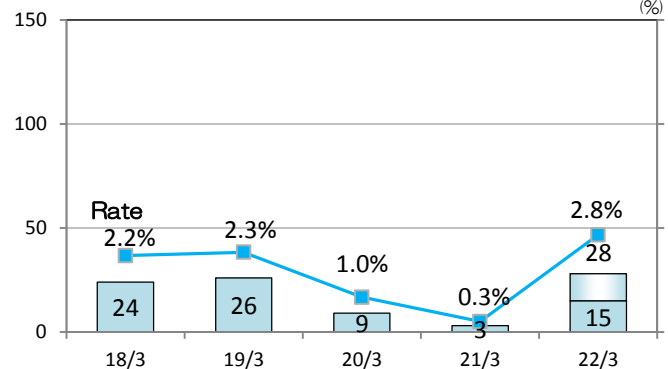
## 7. Capital Investment and Depreciation

(100Million yen)



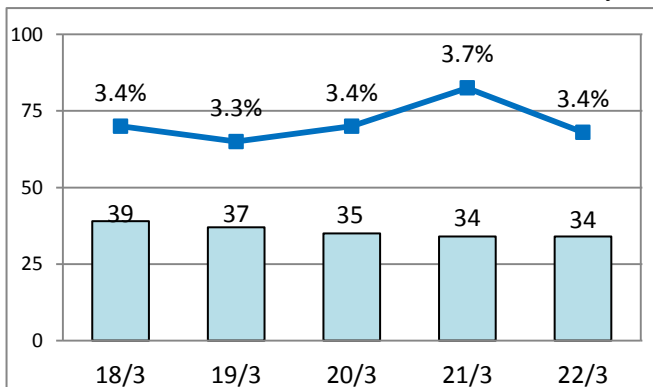
### (4) Profit(Loss) Attributable to Owners of Parent

(100Million yen)



## 8. Research and Development Expenditure

(100Million yen)



## 9. Segment Information

(100Million yen)

	2020.4~ 2020.9		2021.4~ 2021.9		Increase/ Decrease	
	Net Sales	Operating Income	Net Sales	Operating Income	Net Sales	Operating Income
Automotive Parts	331	-1	440	33	109	35
Equipment	72	4	60	6	-12	2
Others	0	-0	0	0	0	0
Common costs(*)	-	-26	-	-27	-	-1
Total	404	-22	501	13	96	35

\* Common costs are principally general administrative expenses not attributable to reporting segments.